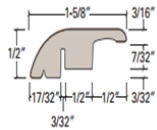


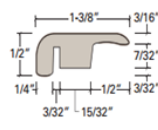


## The New Standard Moldings

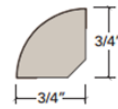
The New Standard moldings are vinyl wrapped and feature a waterproof plastic core with the exception of quarter round which has an MDF core. The 94" long moldings are available in Reducer (RD), EndCap (EC), and Quarter Round (QR). The Reducer easily snaps into the included track strip. The T-mold (TH) and the Flush Stairnose (FS) are 96" long. The T-mold does not come with a track.



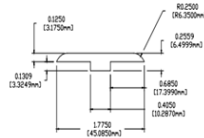
Reducer



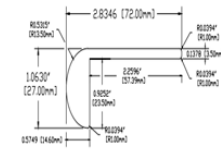
End Cap



Quarter Round



T - Mold



Flush Stair Nose

### Reducer Installation Instructions

1. Measure and trim to fit.
2. Attach track to floor using adhesive, nails or screws.
3. Insert molding into track. Tap down with a rubber mallet.

### End Cap Installation Instructions

1. Measure and trim to fit.
2. Affix molding to floor using finish nails or adhesive.

### Quarter Round Installation Instructions

1. Measure and trim to fit.
2. Attach molding to the floor using finish nails or adhesive.

### T-mold Installation Instructions

1. Measure and trim to fit.
2. Affix molding to floor using finish nails or adhesive

### Flush Stairnose Installation Instructions

1. Measure and trim to fit.
2. Affix molding to floor using finish nails or adhesive.

**Adhesive:** Engineered Floors recommends using a construction adhesive similar to Liquid Nails or Hillway Direct molding tape, available at 1877Floorguy.com, <http://www.1877floorguy.com/hilway-direct-molding-tape.html>, or a similar tape. The adhesive manufacturer's recommendations must be followed completely.

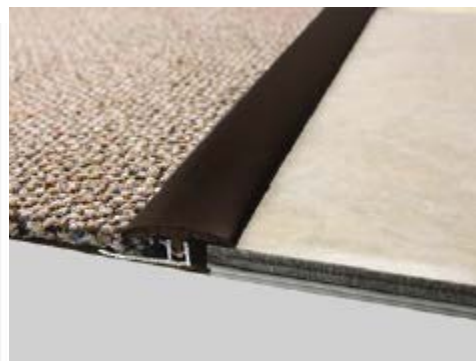
**Nails or Screws:** Engineered Floors recommends using wood screws or nails with flat head to attach the molding track to the floor.

**Finish Nails:** When installing the Quarter round or baby Threshold using finish nails, the installer will need to use a nail set and putty the nail holes with appropriately colored wood putty available at most hardware stores.

**End Cap or Square Nose:** Used to transition from hard surface floors to carpet, masonry (fireplaces), sliding doors, and other exterior door jambs.



**Reducer:** Used to transition from hard surface floors to floors of different height.



**Quarter Round (also referred to as a Shoe Molding)**: Used to conceal the required expansion space between the wall and the hard surface floors.



**T- Molding**: Used to transition from hard surface floors to another floor that is approximately the same height. T- Moldings are also commonly used in doorways to join two floating floors in adjoining rooms.



**Flush Stairnose**: Used to combine style and function, to enhance the beauty of a finished edge on a stair tread.

Technical Services

1-866-706-9745 x7105

[hstechservice@engineeredfloors.com](mailto:hstechservice@engineeredfloors.com)